



Product details

09 14 000 6258
Female contact

Contact type with shut off
Diameter 4,0 mm
Application browsing..
Series Han® Pneumatic-module, 3-poles; 1.6 / 3 / 4mm
RoHS compliant Yes

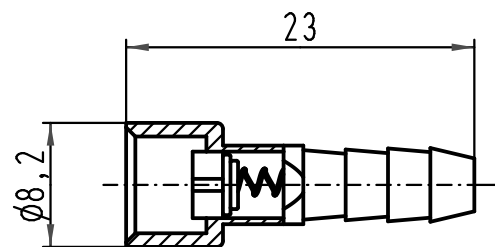
1 2 3 4 5 6

A

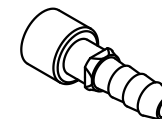
B

C

D



Kontakt für Schlauchinnendurchmesser 4,0 mm
tube fitting insert for tubing size ID 4,0 mm



| | | | | | | | | | |
|---|----------|------|--------------------------------|----------|------|--|--|--|-------------|
| All Dimensions in mm Original Size DIN A 4 | | | Techn. Character. | | | Nicht tolerierte Maße/Free size tolerances | | | |
| | | | | Dat. | Name | Maßstab/Scale 2:1 | Han-Modular Pneumatikbuchsenkontakt m. Absperrung <i>pneumatic female tube fitting with shutoff</i> | | |
| | | | Detail. | 20.10.98 | SPER | | | | |
| | | | Insp. | | SDT | | | | |
| | | | Stand. | | | | | | |
| 413153 | 27.08.07 | Bor | HARTING Electric GmbH & Co. KG | | | | TB 09 14 000 6258 | | Blatt/ page |
| 27321 | 07.03.00 | Gä | D-32339 Espelkamp | | | | | | |
| Mod. | Dat. | Name | | | | | Sub. TB 09 14 000 6... v. 23.06.94 | | |